

# STONE STREET □



<b>Oil Pattern Distance:</b> 42 Feet	<b>Reverse Brush Drop:</b> 42 Feet	<b>Oil Per Board:</b> 50 uL
<b>Forward Oil Total:</b> 11.5 mL	<b>Reverse Oil Total:</b> 11.65 mL	<b>Volume Oil Total:</b> 23.15 mL
<b>Forward Boards Crossed:</b> 230 Boards	<b>Reverse Boards Crossed:</b> 233 Boards	<b>Total Boards Crossed:</b> 463 Boards

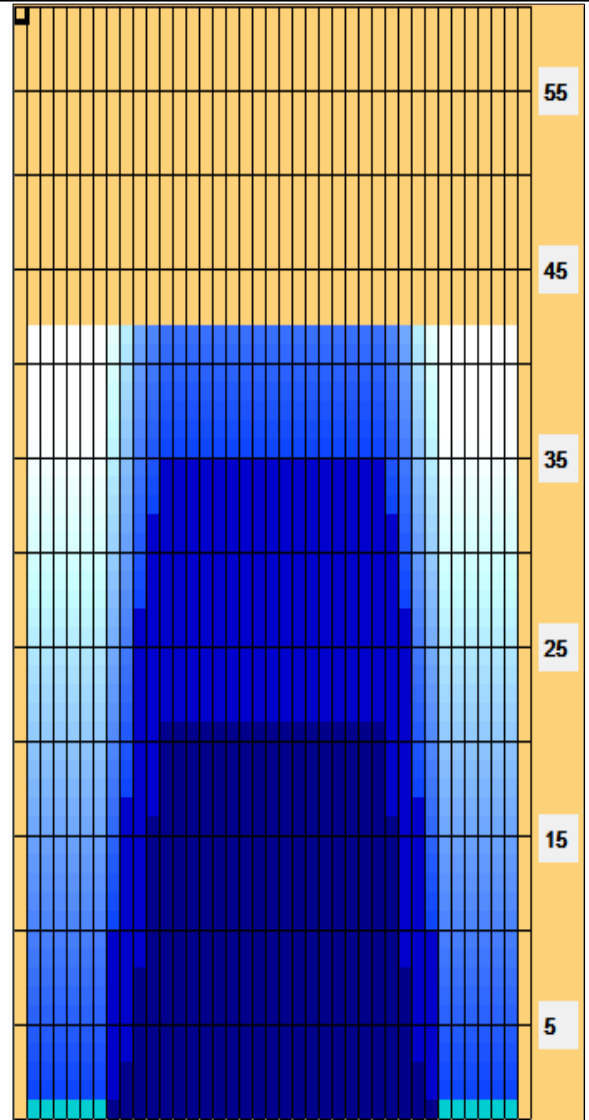
Start	Stop	Loads	Speed	Crossed	Start	End	Feet	T.Oil
1	2L 2R	2	14	74	0.0	1.9	1.9	3700
2	9L 9R	1	14	23	1.9	3.8	1.9	1150
3	10L 10R	2	18	42	3.8	8.9	5.1	2100
4	11L 11R	3	18	57	8.9	16.5	7.6	2850
5	12L 12R	2	18	34	16.5	21.6	5.1	1700
6	2L 2R	0	18	0	21.6	34.0	12.4	0
7	2L 2R	0	26	0	34.0	38.0	4.0	0
8	2L 2R	0	30	0	38.0	42.0	4.0	0

Start	Stop	Loads	Speed	Crossed	Start	End	Feet	T.Oil
1	2L 2R	0	30	0	42.0	35.0	-7.0	0
2	12L 12R	1	18	17	35.0	32.5	-2.5	850
3	11L 11R	2	18	38	32.5	27.4	-5.1	1900
4	10L 10R	4	18	84	27.4	17.2	-10.2	4200
5	9L 9R	3	18	69	17.2	9.6	-7.6	3450
6	8L 8R	1	14	25	9.6	7.7	-1.9	1250
7	2L 2R	0	10	0	7.7	0.0	-7.7	0

Conditioner:  
Type In or Select One

TransferType:  
Type In or Select One

- Forward
- Reverse
- Combined
- Buff



This Pattern Up Loaded From Slot # 5 In Lane Machine On 9/10/2013 11:35 AM

Item	3L-7L:18L-18R	8L-12L:18L-18R	13L-17L:18L-18R	18L-18R:17R-13R	18L-18R:12R-8R	18L-18R:7R-3R
Description	Outside Track:Middle	Middle Track:Middle	Inside Track:Middle	Middle:Inside Track	Middle:Middle Track	Middle:Outside Track
Track Zone Ratio	10.5	1.69	1	1	1.69	10.5

